

# THE ASHDOWN MANOR GARDENS



3 | 

2 | 

1 | 



## KEY FEATURES

- 1 double bedroom & 2 single bedrooms
- Spacious lounge
- Utility room
- En-suite from master bedroom
- 2 parking spaces
- Downstairs W.C

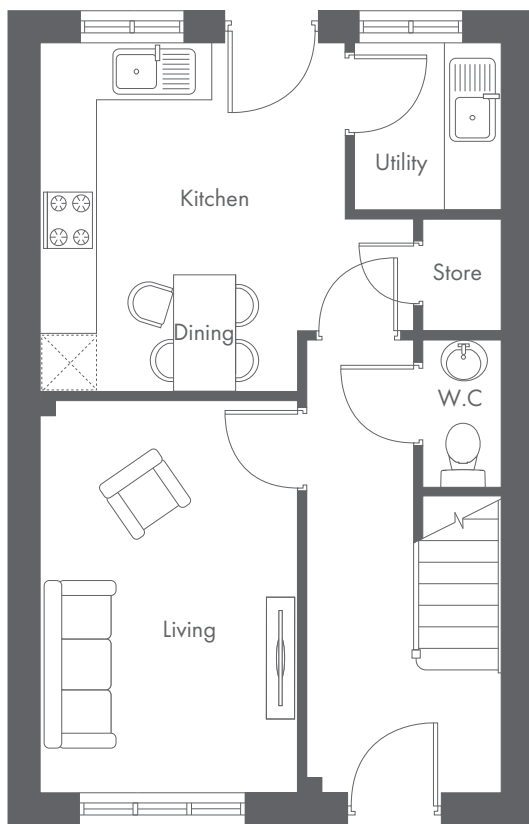


**The Ashdown**  
Shared Ownership plots  
26-29, 35-38, 40-43,  
72, 75 and 90-93

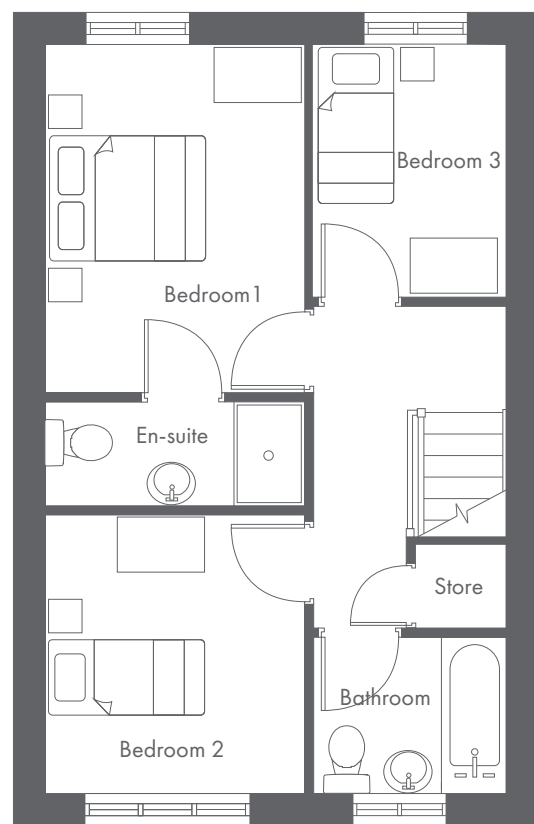
**MANOR GARDENS, CHESTER ROAD, HARTFORD CW8 1LJ**

A range of contemporary 2, 3 & 4-bedroom houses and 2-bedroom bungalows

# THE ASHDOWN MANOR GARDENS





Ground Floor	Metric	Imperial
Kitchen	3.9 x 3.4	12'10" x 11'2"
Utility	1.9 x 1.6	6'3" x 5'3"
W.C	0.9 x 1.7	2'11" x 5'7"
Living	4.3 x 2.9	14'1" x 9'6"





First Floor	Metric	Imperial
Bed 1	3.9 x 2.9	12'10" x 9'6"
Bed 2	3.0 x 2.9	9'10" x 9'6"
Bed 3	2.8 x 2.1	9'2" x 6'11"
En-suite	2.9 x 1.2	9'6" x 3'11"
Bathroom	2.1 x 1.8	6'11" x 5'11"


CONTACT OUR TEAM

 01606 822 936

 [yourhousinggroup.co.uk](http://yourhousinggroup.co.uk)

 @yourhousinggroup

 @Your\_Housing

 @yourhousing