

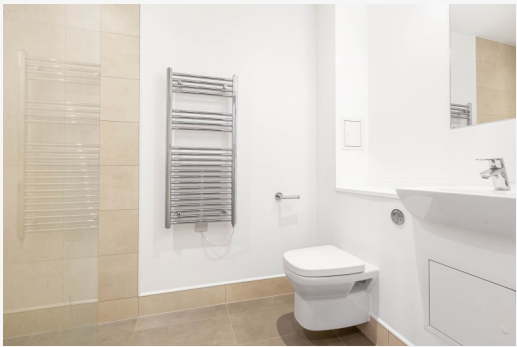
Lived in, loved and on the market



Bollo Lane, Chiswick, W4 5QW

One bed Pocket home | Rooftop communal gardens | Close proximity to vast local amenities







Bollo Lane, W4 5QW £305,000

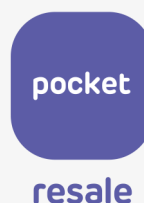
This spacious third floor, one bedroom home at Bollo Lane, benefits from great transport locations. Only 5 minute walk from South Acton station and in just under 10 minutes from Chiswick Park, Gunnersbury and Acton Town stations. The property is just a short walk from a range of parks and green spaces such as Gunnersbury Park, Acton Green, Turnham Green, Chiswick Common and Chiswick House & Gardens. Chiswick High Road is only a 10 minute walk from Bollo Lane and offers an array of cafes, restaurants, pubs and retail spaces. The home offers a bright open-plan living area, featuring large floor to ceiling windows, with amazing views of London city. The development benefits from two communal rooftop gardens and a residents lounge. Double bedroom with built in full-size wardrobe.

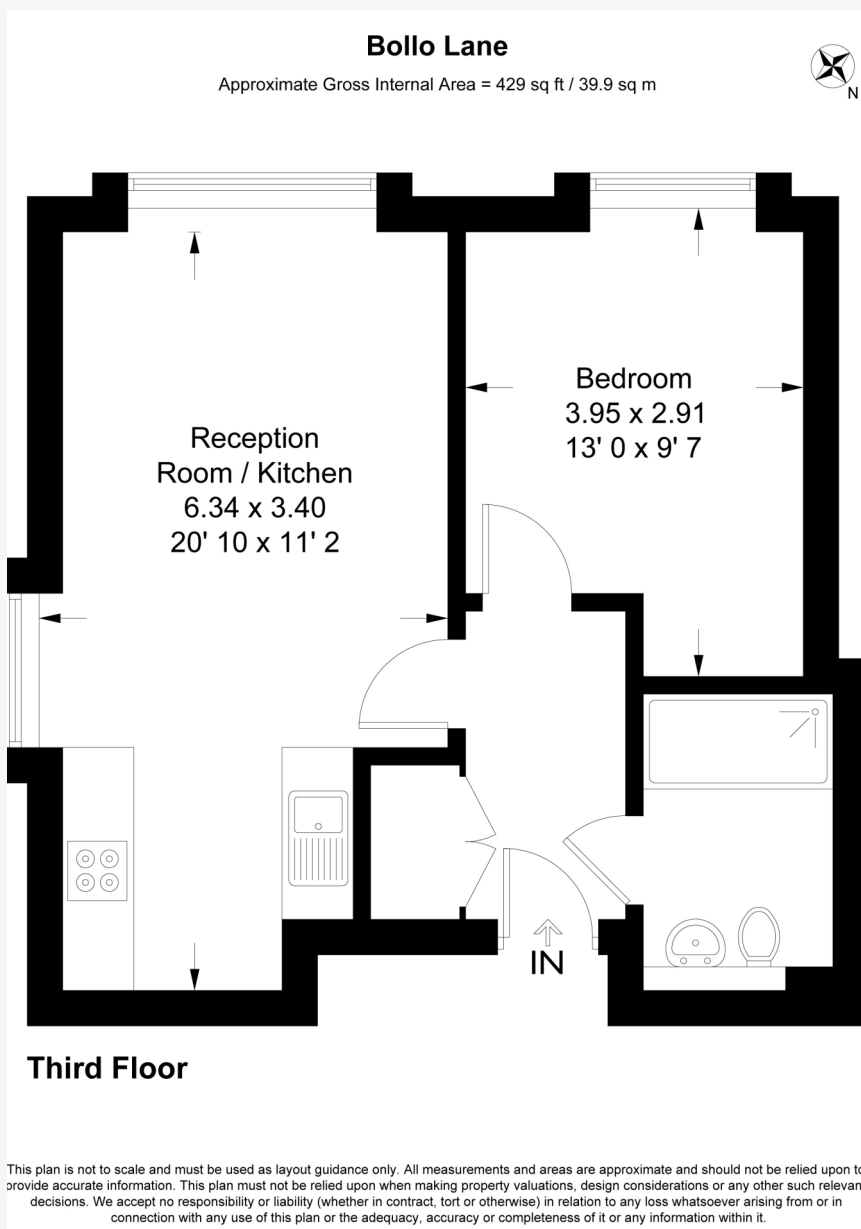
The property includes features such as:

- Well-designed kitchen with built in appliances
- Communal landscaped rooftop gardens where you can meet and relax with your neighbours, family, and friends
- Communal lounge space with seating area and TV
- Secure cycle storage
- Join a community of city makers

"Really enjoying living in this building, great environment with great people as neighbours. Flat is conveniently located to nearby shops and other amenities within a 10 min walking distance. Property benefits from nice, big windows, letting in plenty of natural light, allowing for beautiful views of London. Flat is a 8 min walking distance to Chiswick Park Station and 10 min to Acton town station."

Homeowner's experience





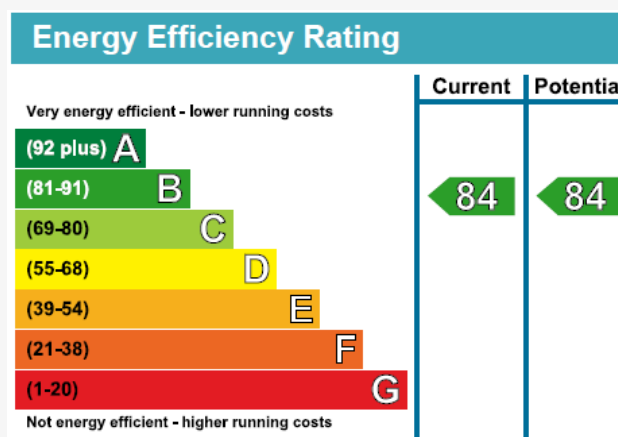
Interested?

Let's organise a viewing

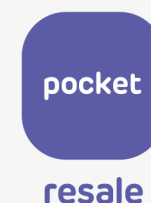
As this is an intermediate affordable home, to view this property you must live or work in the London Borough of Ealing, do not own any property, and have a household income below the GLA Income Threshold set by the Mayor of London (currently £90,000 per annum).

[Click to email us](#)

This is the start of your journey to homeownership!



Please note that Pocket Living have not inspected the property. Viewings are arranged between yourself and the seller at your own risk and Pocket Living do not accept any responsibility with regards to any viewings. By arranging a viewing you agree to your contact details being passed on to the Seller. Please refer to our Privacy Policy on our website for further information about how we handle data.





resale

pocketliving.com

resale@pocketliving.com