

Wimbledon Court

Bradwell Common








There's no place like home

Putting customers first

Building homes is what Amplius does, and we do it exceptionally well across the Midlands and beyond. Over a number of years, we've seen what people really like about the homes we build and we build on that experience.

So you know that behind the kerb appeal, there's a structure that meets the highest professional standards. You know that every detail has been checked and inspected. That's experience!

Finally, **location, location, location**. You will see, we try to find the very best spot for every taste, as we believe in quality homes, in quality places.





Home is a place for everything

Your home should fit around your life. So whether you're a budding chef, artist or just like to relax, you'll find room for whatever you're passionate about.

Home is for making memories

Your home is your haven. From the minute you unlock your front door, a new chapter in your life begins.

Home is where your family grows

From baby to young adult, having a space in which your family can grow together is so important. That's why we build more than just homes.

Home is a warm place

Whether you're curling up on the sofa or having a family meal, your home will keep you warm and content all year round.

Homes built to last

There's no feeling like stepping into your new home. Whatever your plans are for tomorrow, we build our homes with a long and happy future in mind.





Home is where love resides

Stylish, modern and full of opportunity, Milton Keynes is a city designed for contemporary living. With beautiful green spaces, excellent shopping and a wealth of leisure and cultural attractions, it's a location that combines convenience with quality of life.

Education

Families moving to Milton Keynes will find a wide choice of highly regarded preschools, primary and secondary schools, all close at hand. Wherever you are in the city, quality education is never far away.

Food and drink

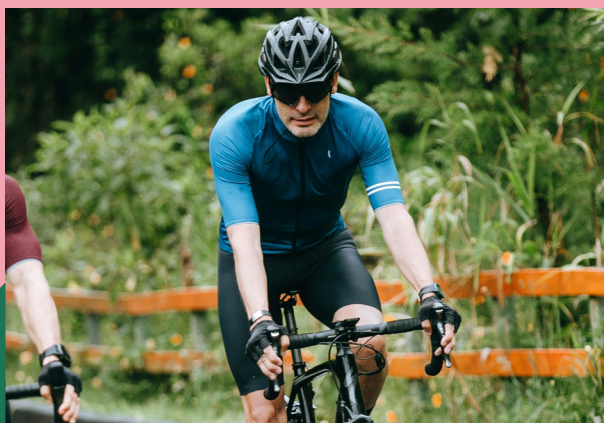
From bustling cafés and welcoming pubs to elegant restaurants and world flavours, Milton Keynes is thriving. Whether it's a quick coffee, a family meal, or a night out, there's something to suit every occasion.

Commuting

Perfect for professionals, Milton Keynes is exceptionally well-connected. Central Station is just a short walk from Wimbledon Court, with direct trains to London Euston in under 40 minutes. For road travel, the M1 is minutes away, and London Luton Airport is within easy reach, making commuting and travel effortless.

Things to do

Life in Milton Keynes offers something for everyone. Watch MK Dons at Stadium MK, enjoy a blockbuster at the 16-screen Odeon cinema, or explore the city's many parks and leisure centres. Add to this a bustling shopping centre, theatres and cultural attractions, it's easy to see why Milton Keynes is one of the UK's most desirable places to live.



Wimbledon Court

Bradwell Common

Development Plan



Facilities

 Bin collection point

Ownership options

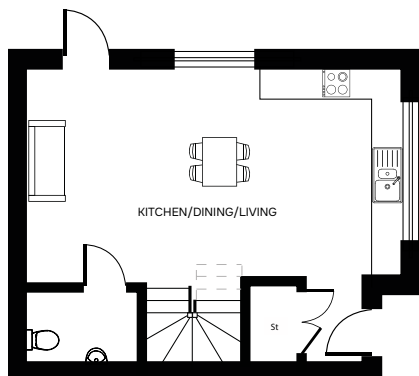
SHARED OWNERSHIP

1 2 3 4 5 6 8 9 10 11 12 13 15 16 17 18

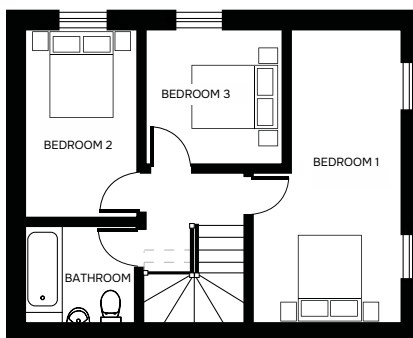
This development layout plan depicts the intended layout and development mix at the time of publication. However, those intentions may change and a purchaser cannot rely on the details shown on this plan. Landscaping shown is only indicative. Any queries should be raised through the conveyancing process.



The Ace



Ground Floor



First Floor

Kitchen/Dining/ Living

4.11m x 7.43m
13'4" x 24'3"

Bedroom 1

3.00m x 5.83m
9'8" x 19'1"

Bedroom 2

2.17m x 3.70m
7'1" x 12'1"

Bedroom 3

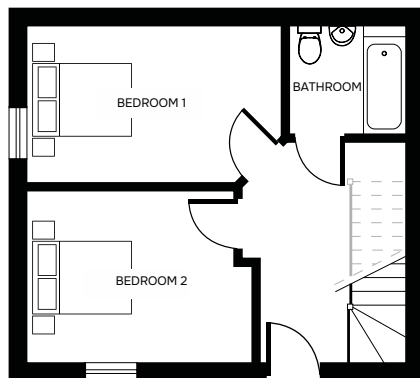
2.77m x 2.66m
9'1" x 8'7"

**All dimensions are
maximum sizes**

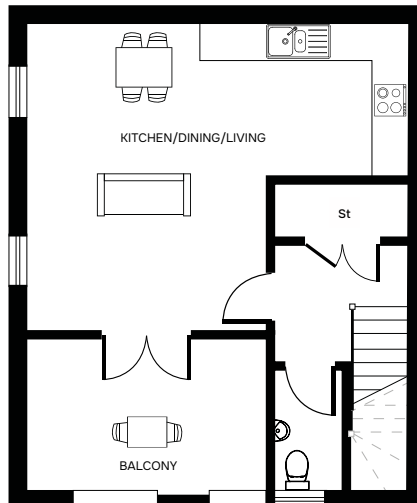
Dimensions stated are to be used as guidance only and should not be used as a basis for furnishings, furniture or appliance spaces. Dimensions for such purposes must be verified against actual site measurements. Please note the handing of plots may vary from the floor plans shown. All images are used for illustrative purposes only and are representative only. They may not be the same as the actual home you purchase and the specification may differ. Images may be of a slightly different model of home, individual features such as windows, brick, carpets, paint and other material colours may vary and also the specification of fittings may vary. Any furnishings and furniture shown are not included in any sale. Please check with a member of our sales team for details of the exact specification for each property type and the associated prices.



The Deuce



Ground Floor



First Floor

Kitchen/Dining/ Living

5.41m x 6.64m
17'8" x 21'9"

Bedroom 1

2.75m x 4.48m
9'0" x 14'8"

Bedroom 2

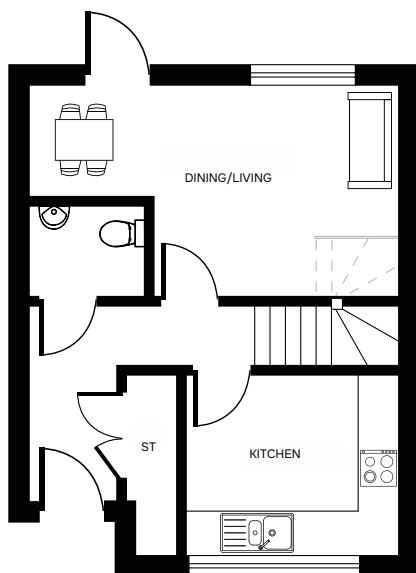
3.06m x 3.95m
10'0" x 12'12"

All dimensions are
maximum sizes

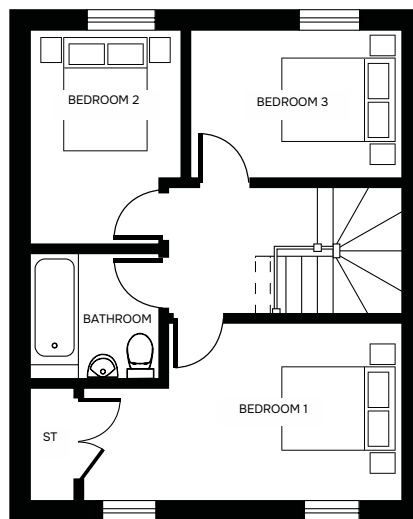
Dimensions stated are to be used as guidance only and should not be used as a basis for furnishings, furniture or appliance spaces. Dimensions for such purposes must be verified against actual site measurements. Please note the handing of plots may vary from the floor plans shown. All images are used for illustrative purposes only and are representative only. They may not be the same as the actual home you purchase and the specification may differ. Images may be of a slightly different model of home, individual features such as windows, brick, carpets, paint and other material colours may vary and also the specification of fittings may vary. Any furnishings and furniture shown are not included in any sale. Please check with a member of our sales team for details of the exact specification for each property type and the associated prices.



The Set



Ground Floor



First Floor

Dining/Living
3.38m x 5.75m
11'1" x 18'10"

Kitchen
3.29m x 2.75m
10'10" x 9'0"

Bedroom 1
2.75m x 5.04m
9'0" x 16'6"

Bedroom 2
2.37m x 3.38m
7'9" x 11'1"

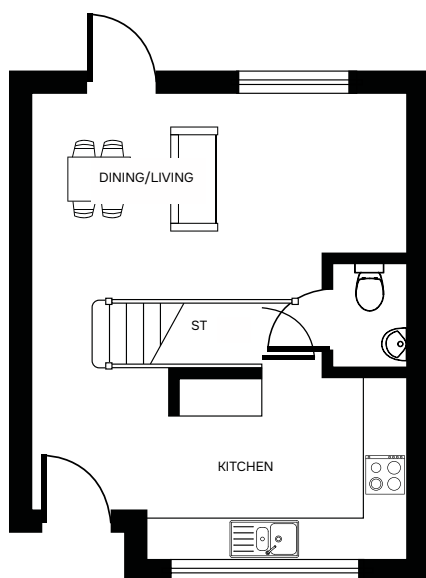
Bedroom 3
3.26m x 2.33m
10'8" x 7'4"

**All dimensions are
maximum sizes**

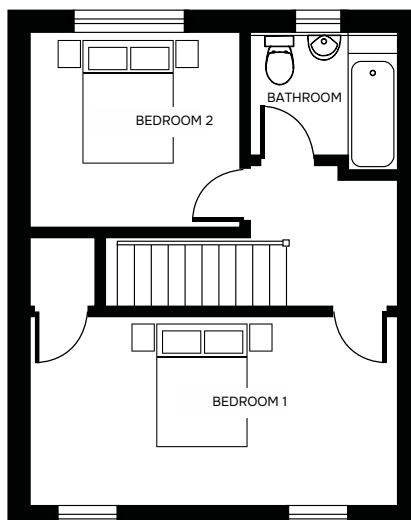
Dimensions stated are to be used as guidance only and should not be used as a basis for furnishings, furniture or appliance spaces. Dimensions for such purposes must be verified against actual site measurements. Please note the handing of plots may vary from the floor plans shown. All images are used for illustrative purposes only and are representative only. They may not be the same as the actual home you purchase and the specification may differ. Images may be of a slightly different model of home, individual features such as windows, brick, carpets, paint and other material colours may vary and also the specification of fittings may vary. Any furnishings and furniture shown are not included in any sale. Please check with a member of our sales team for details of the exact specification for each property type and the associated prices.



The Match



Ground Floor



First Floor

Dining/Living
3.05m x 5.43m
10'0" x 17'10"

Kitchen
2.66m x 3.74m
8'9" x 12'3"

Bedroom 1
2.73m x 5.43m
8'11" x 17'10"

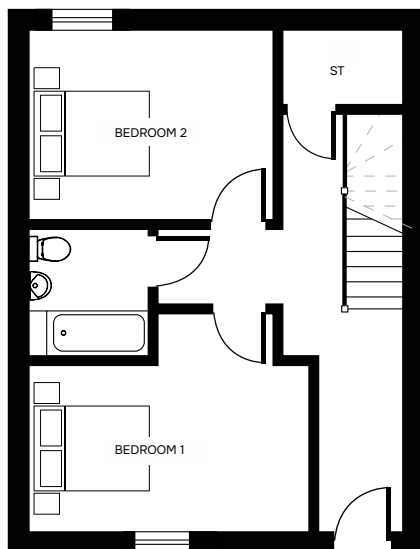
Bedroom 2
2.83m x 3.17m
9'3" x 10'5"

**All dimensions are
maximum sizes**

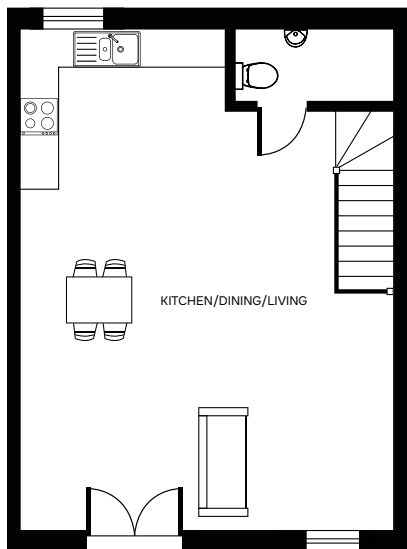
Dimensions stated are to be used as guidance only and should not be used as a basis for furnishings, furniture or appliance spaces. Dimensions for such purposes must be verified against actual site measurements. Please note the handing of plots may vary from the floor plans shown. All images are used for illustrative purposes only and are representative only. They may not be the same as the actual home you purchase and the specification may differ. Images may be of a slightly different model of home, individual features such as windows, brick, carpets, paint and other material colours may vary and also the specification of fittings may vary. Any furnishings and furniture shown are not included in any sale. Please check with a member of our sales team for details of the exact specification for each property type and the associated prices.



The Volley



Ground Floor



First Floor

Kitchen/Dining/ Living

8.22m x 6.16m
26'12" x 20'3"

Bedroom 1

4.31m x 2.78m
14'2" x 9'1"

Bedroom 2

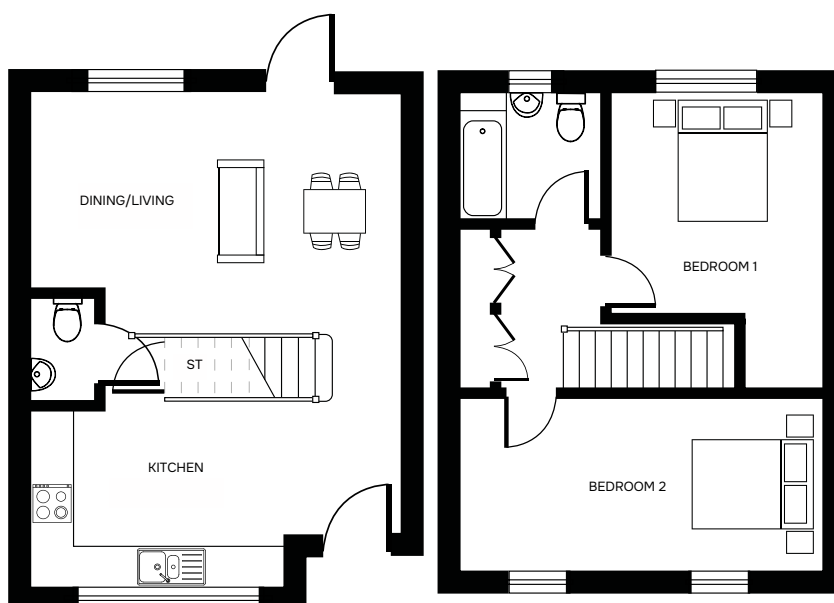
3.70m x 3.05m
12'2" x 10'0"

**All dimensions are
maximum sizes**

Dimensions stated are to be used as guidance only and should not be used as a basis for furnishings, furniture or appliance spaces. Dimensions for such purposes must be verified against actual site measurements. Please note the handing of plots may vary from the floor plans shown. All images are used for illustrative purposes only and are representative only. They may not be the same as the actual home you purchase and the specification may differ. Images may be of a slightly different model of home, individual features such as windows, brick, carpets, paint and other material colours may vary and also the specification of fittings may vary. Any furnishings and furniture shown are not included in any sale. Please check with a member of our sales team for details of the exact specification for each property type and the associated prices.



The Strike



Ground Floor

First Floor

Dining/Living
3.63m x 5.62m
11'11" x 18'5"

Kitchen
2.65m x 3.80m
8'8" x 12'6"

Bedroom 1
3.46m x 3.35m
11'4" x 10'12"

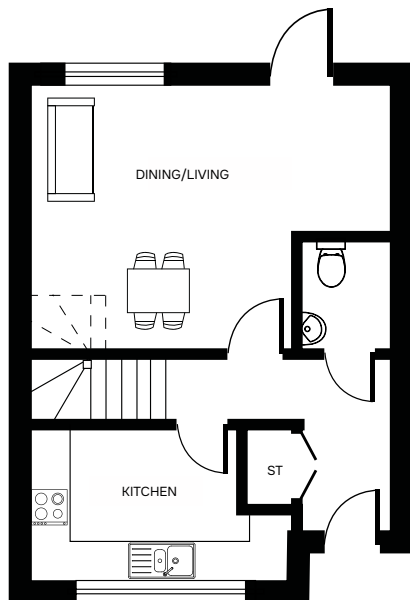
Bedroom 2
2.65m x 5.62m
8'8" x 18'5"

**All dimensions are
maximum sizes**

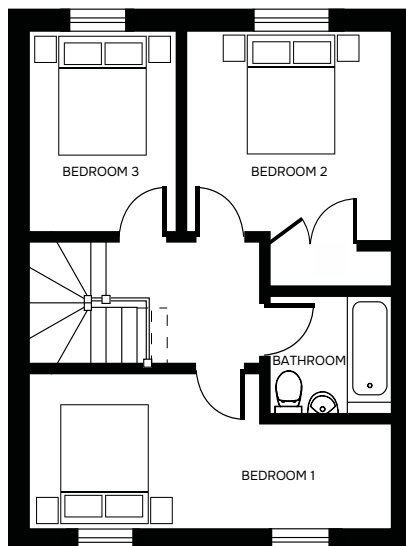
Dimensions stated are to be used as guidance only and should not be used as a basis for furnishings, furniture or appliance spaces. Dimensions for such purposes must be verified against actual site measurements. Please note the handing of plots may vary from the floor plans shown. All images are used for illustrative purposes only and are representative only. They may not be the same as the actual home you purchase and the specification may differ. Images may be of a slightly different model of home, individual features such as windows, brick, carpets, paint and other material colours may vary and also the specification of fittings may vary. Any furnishings and furniture shown are not included in any sale. Please check with a member of our sales team for details of the exact specification for each property type and the associated prices.



The Advantage



Ground Floor



First Floor

Dining/Living
4.37m x 5.87m
14'4" x 19'3"

Kitchen
4.18m x 2.55m
13'9" x 8'4"

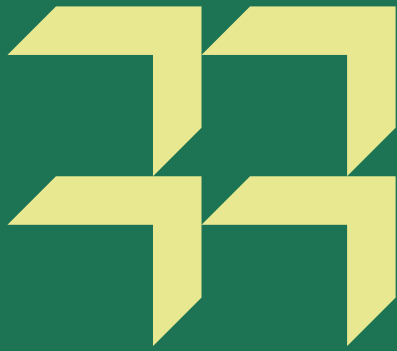
Bedroom 1
3.45m x 3.33m
11'4" x 10'11"

Bedroom 2
5.87m x 2.55m
19'3" x 8'4"

Bedroom 3
3.32m x 2.42m
10'11" x 7'11"

**All dimensions are
maximum sizes**

Dimensions stated are to be used as guidance only and should not be used as a basis for furnishings, furniture or appliance spaces. Dimensions for such purposes must be verified against actual site measurements. Please note the handing of plots may vary from the floor plans shown. All images are used for illustrative purposes only and are representative only. They may not be the same as the actual home you purchase and the specification may differ. Images may be of a slightly different model of home, individual features such as windows, brick, carpets, paint and other material colours may vary and also the specification of fittings may vary. Any furnishings and furniture shown are not included in any sale. Please check with a member of our sales team for details of the exact specification for each property type and the associated prices.



Our commitment to you

Before you move

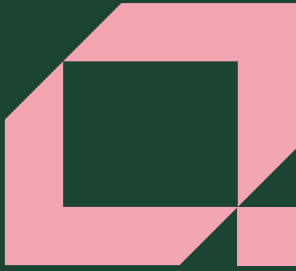
- Our friendly sales team will provide you with support and guidance throughout the home buying process
- At pre-reservation stage you will be shown details of the appearance and location of your chosen new home, together with all relevant surrounding information
- The reservation agreement will set out the key terms of your home purchase, including the reservation period, purchase price and other important information
- We will go through the specification and layout of your home and details of any pre-contractual information to enable you to make an informed decision
- We will inform you of your main point of contact who will assist you with information during your reservation and after you have moved into your new home
- We will regularly communicate with you to keep you informed of the progress of your new home and your dedicated point of contact will respond to any queries you may have
- We want to make your move as enjoyable as possible and our welcoming and knowledgeable staff will be with you every step of the way to provide a service that is tailored to you and your needs.

When/after you move in

- On the day you move a dedicated sales advisor will welcome you to your new home
- A detailed homecare booklet will be provided to help you settle in
- Shortly after you have moved in, we will make courtesy calls/visits to ensure you are happy with your new surroundings
- Your new home is covered by an NHBC or similar industry regulated 10-year insurance scheme covering the fabric and structural integrity of your new home.

We do value your comments and feedback so we can continually improve and enhance our service. If you have any comments you'd like to share with us, please contact: 0333 015 2414 or sales.gu@amplius.co.uk





For sales enquiries

Amplius, K2, Timbold Drive, Kents Hill,
Milton Keynes MK7 6BZ

☎ 0333 015 2414

✉ sales.gu@amplius.co.uk

🌐 amplius.co.uk

Further information relating to Amplius can be accessed via our
website: amplius.co.uk

The information contained within this booklet is offered in good faith
and is believed to be correct. However, accuracy is not guaranteed.
No liability will attach to Amplius, their representatives or agents in
respect of any statement contained here.