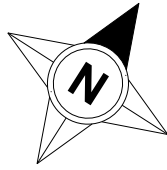


# Tabard Street, London, SE1

Approximate Area = 563 sq ft / 52.3 sq m

For identification only - Not to scale



**Terrace**  
38'1 (11.62)  
x 12'11 (3.93) max

**Bedroom**  
14'5 (4.37)  
x 10'10 (3.30)

**Kitchen / Reception Room**  
18'5 (5.62) max  
x 15'9 (4.79) max

**Bathroom**  
7'2 (2.17)  
x 6'5 (1.95)

**GROUND FLOOR**



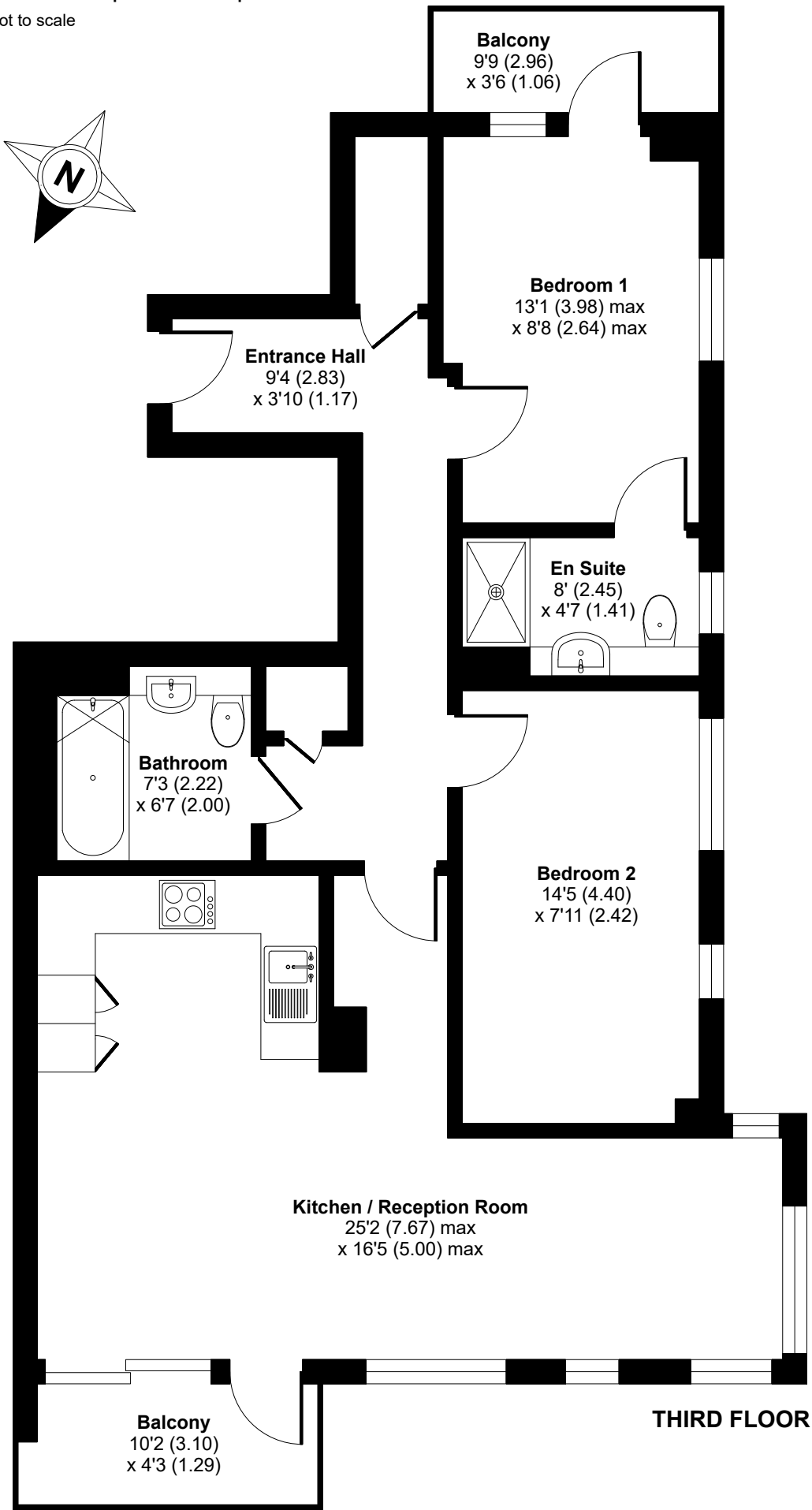
Floor plan produced in accordance with RICS Property Measurement 2nd Edition, Incorporating International Property Measurement Standards (IPMS2 Residential). © n1cheom 2025. Produced for Red Loft Limited Liability Partnership. REF: 1359483

**redloft**

# Tabard Street, London, SE1

Approximate Area = 780 sq ft / 72.5 sq m

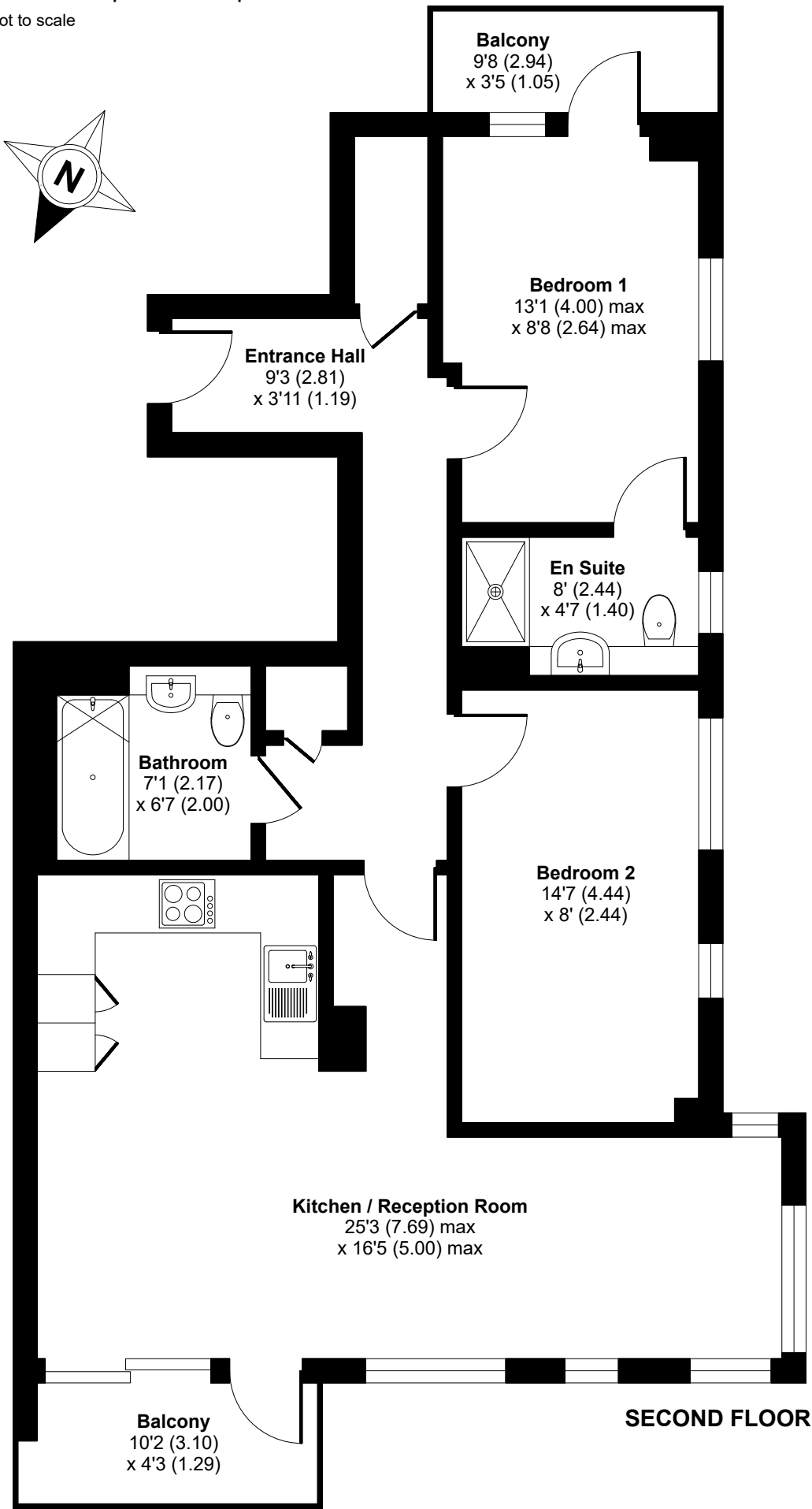
For identification only - Not to scale



# Tabard Street, London, SE1

Approximate Area = 780 sq ft / 72.5 sq m

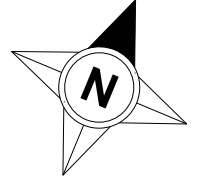
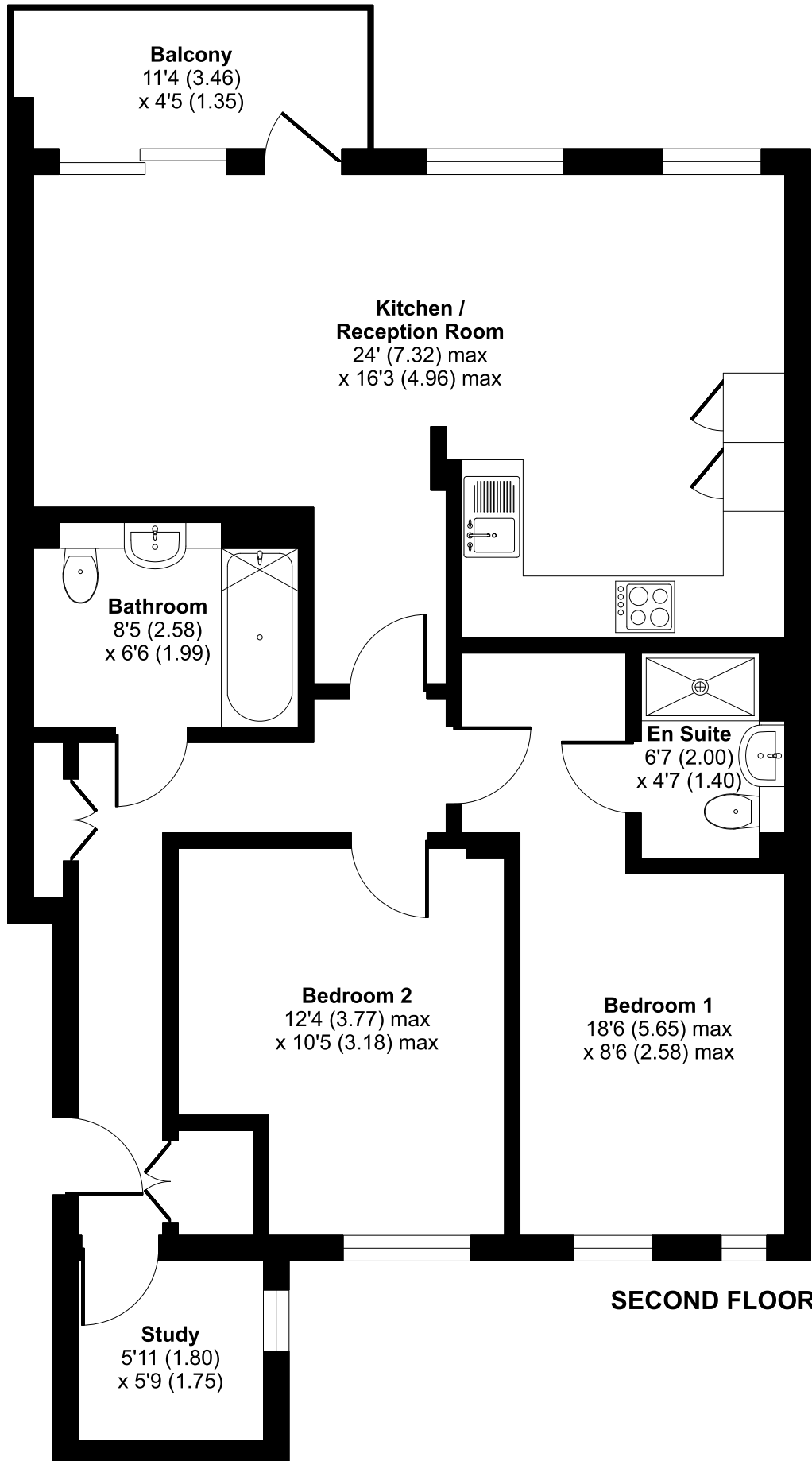
For identification only - Not to scale



# Tabard Street, London, SE1

Approximate Area = 837 sq ft / 77.7 sq m

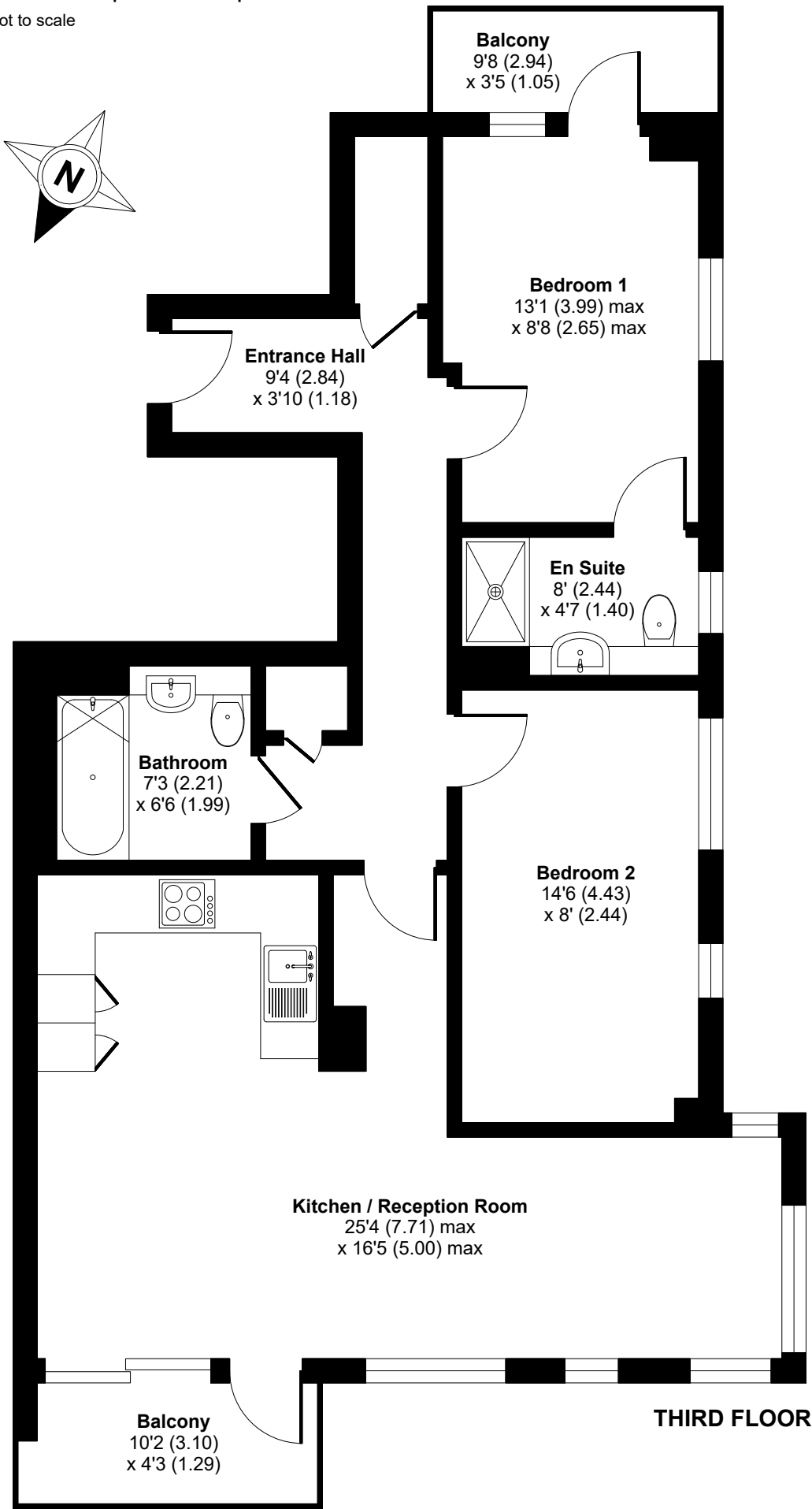
For identification only - Not to scale



# Tabard Street, London, SE1

Approximate Area = 780 sq ft / 72.5 sq m

For identification only - Not to scale



# Tabard Street, London, SE1

Approximate Area = 780 sq ft / 72.5 sq m

For identification only - Not to scale

