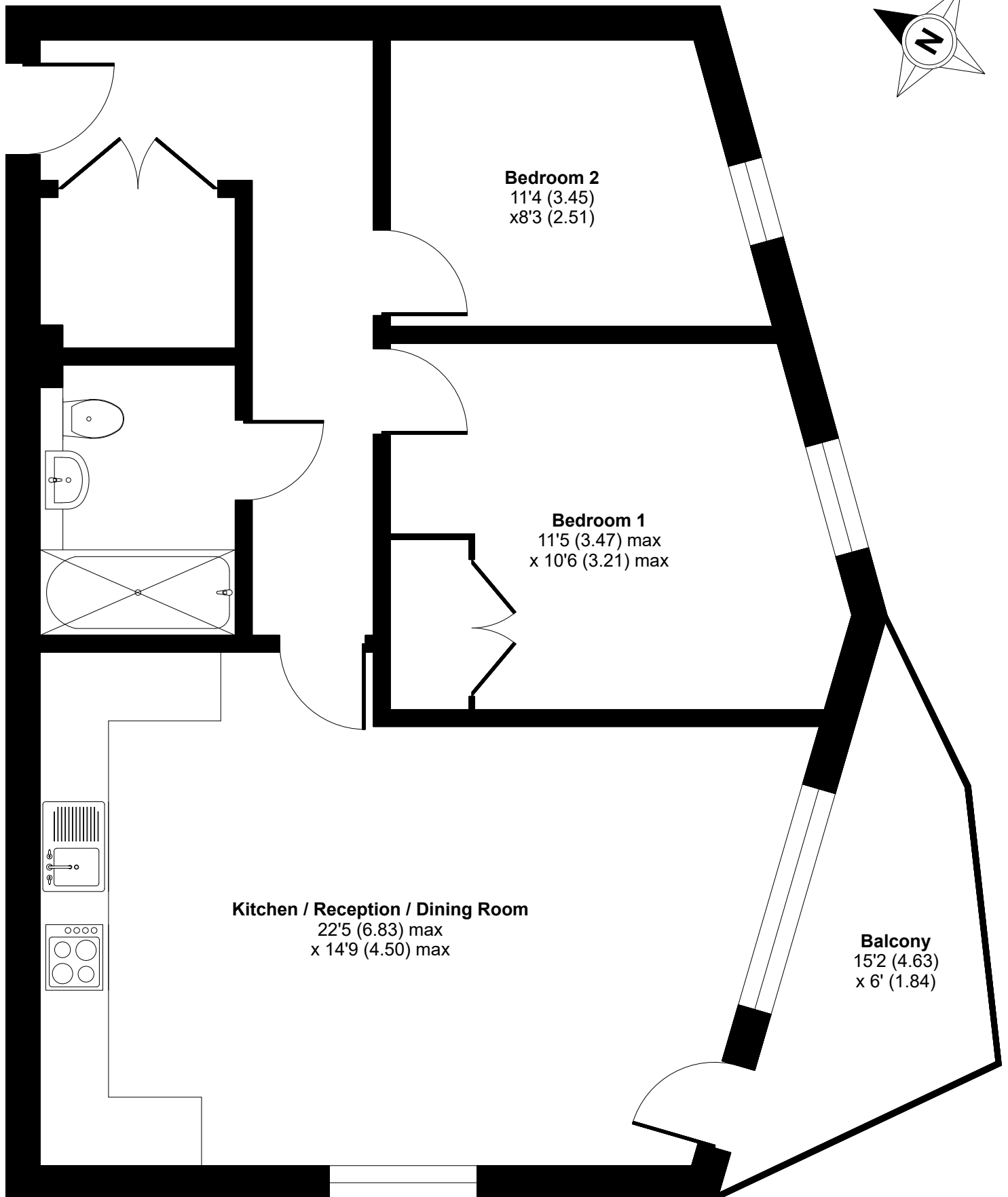
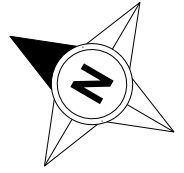


High Street, Teddington, TW11

Approximate Area = 682 sq ft / 63.3 sq m

For identification only - Not to scale



THIRD FLOOR



Floor plan produced in accordance with RICS Property Measurement 2nd Edition, Incorporating International Property Measurement Standards (IPMS2 Residential). © nitchecom 2025. Produced for Red Loft Limited Liability Partnership. REF: 1393299

redloft